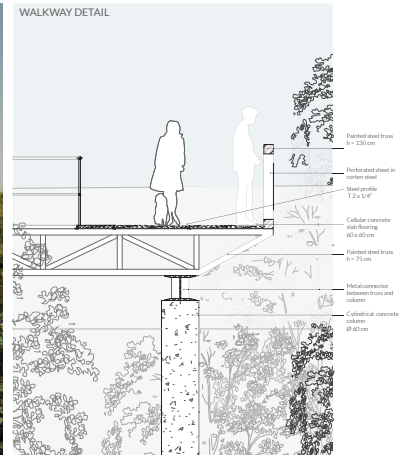
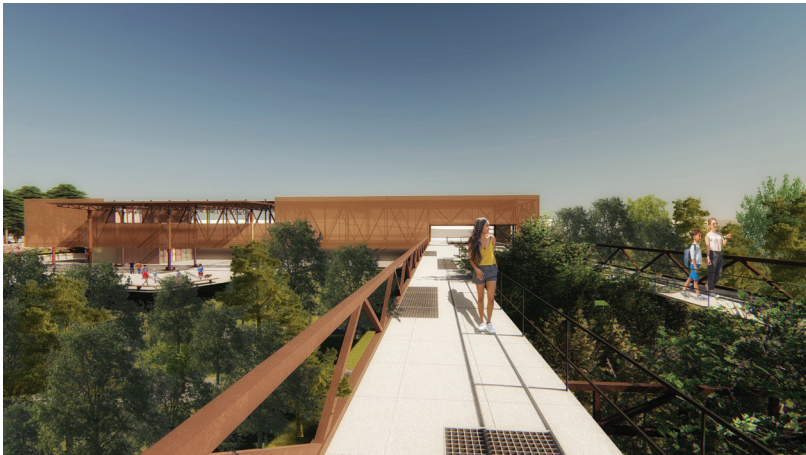




UIA2020RIO

27th World Congress of Architects

Project Name: The nature of the margin
Authors: Maria Gabriella Stabile Gomes
Country: Brazil



In 1938 the first plan of Goiânia (Goiás, Brazil) proposed a series of parks along the water courses. Among them, the biggest was Botafogo Park, on the margins of Botafogo stream. As a result of irregular occupations, invasions and finally the construction of a freeway and stream's channelization, the park was gradually fragmented and lost its identity.

In this scenario lies CEPAL. A covered space, designed as a public equipment that aimed to host the street fair and offer new options of leisure for the population. However, due to the lack of urban infrastructure, the fragmentation of the surroundings and the temporary use of its activities, it became a residual space.

Facing this context, the present work is defined as a proposal for requalification of a Botafogo stream's segment with the intention of showing a scenario which is possible to reach, through urban planning and democratization of public space. CEPAL's space is then reinterpreted.

GENERAL GUIDELINES

- 01 Renewal of the environmental axis of the stream.
- 02 Botafogo stream's axis as a connection agent.
- 03 Enrich public spaces.
- 04 Housing density.

URBAN INDICES

Housing segment	20,43 ha
Leisure segment	16,31 ha
Free activities segment	19,75 ha

THE BRIDGE BUILDING

From the studies on the street fair's space and the attempts of recoordination from the public authorities, the premise raised is that the new building should go against this formalization. The street fair's territory represents a specific experience of sociability and street use (Mascarenhas e Dolzani 2008, 72).

In order to enhance this experience, the new building, a bridge building, is a space free for the most diverse forms of appropriation that reinterprets the street's space by acting as articulator of flows and spaces.

MASCARENHAS, G; DOLZANI, M.C.S. "Feira livre: territorialidade popular e cultura no metrópole contemporânea". *Revista Eletrônica Abitare Geográfica* 2,2, pp. 72-81. UFPA/RS.

